

# Assignment Two

## London Euston station Folly

By Agnieszka Frodel-Shuttleworth

## Brief:

Design a functional and durable folly inspired by the issue of war in Ukraine.

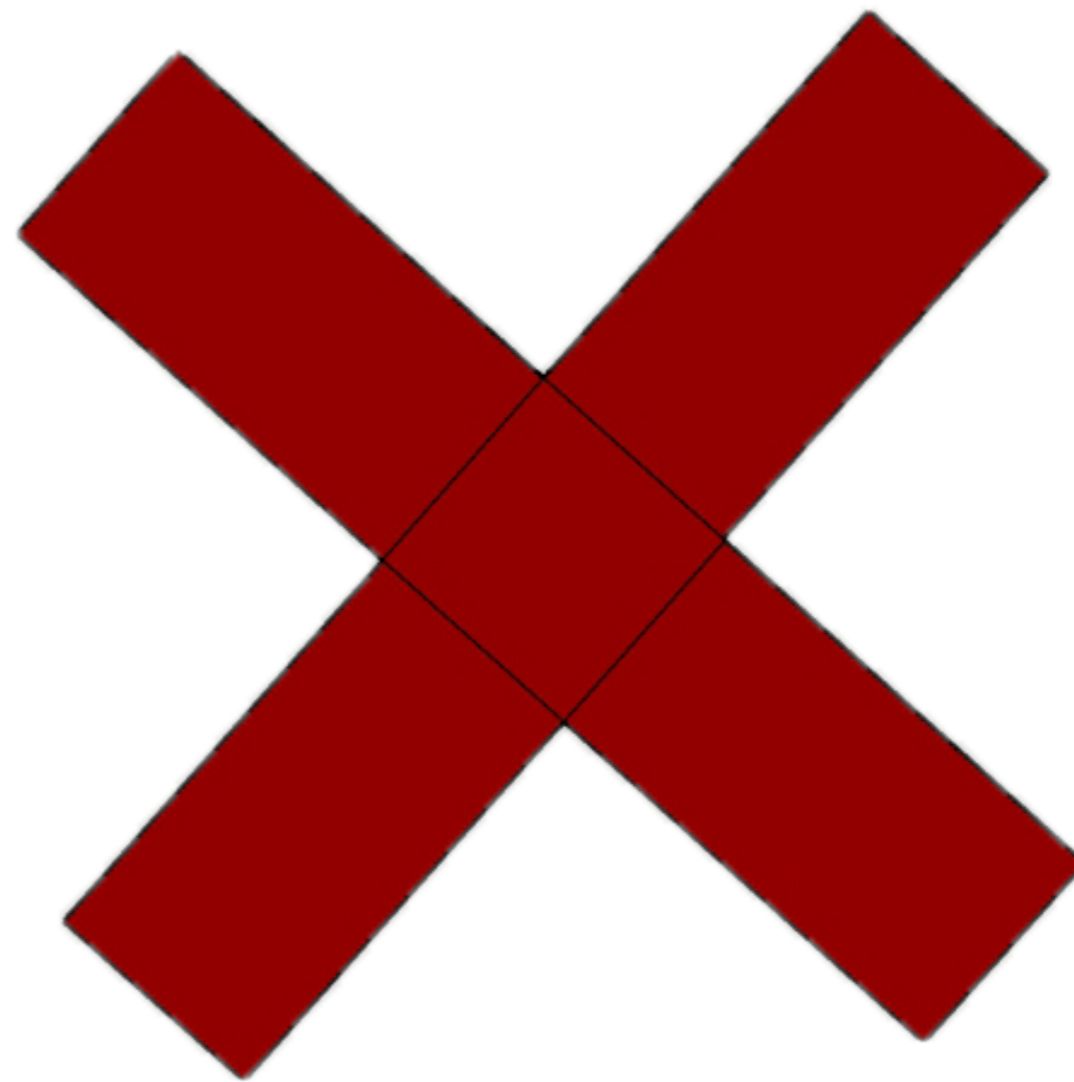
The design should challenge a parametre of boundary.

Maximum footprint of the folly should be 2.5m x 2.5m and no taller than 3.5m.

The structure should be self-supporting and not need foundations or tethering.

If sited in an external location the Folly should be stable enough to withstand adverse weather conditions.

Your Folly should provide seating for at least three people.



# Exploration of the theme of war





## Site selection

I decided that my folly will be made of wood. I was not sure how durable it would be outside, considering the cross plan and no anchoring to the ground. Therefore I decided it will be an indoor structure placed inside one of the London train stations.

I thought of my favourite stations that have beautifully restored interiors - they are London King's Cross and London Bridge Station. Then I thought again and decided to place my folly in not so beautiful surroundings, I chose London Euston Station as I find its interior quite depressing and thought it could do with a little 'pick-me-up'. At the moment there are works extending and renovating the station, but while this is happening the main station concourse is being as it was for years.

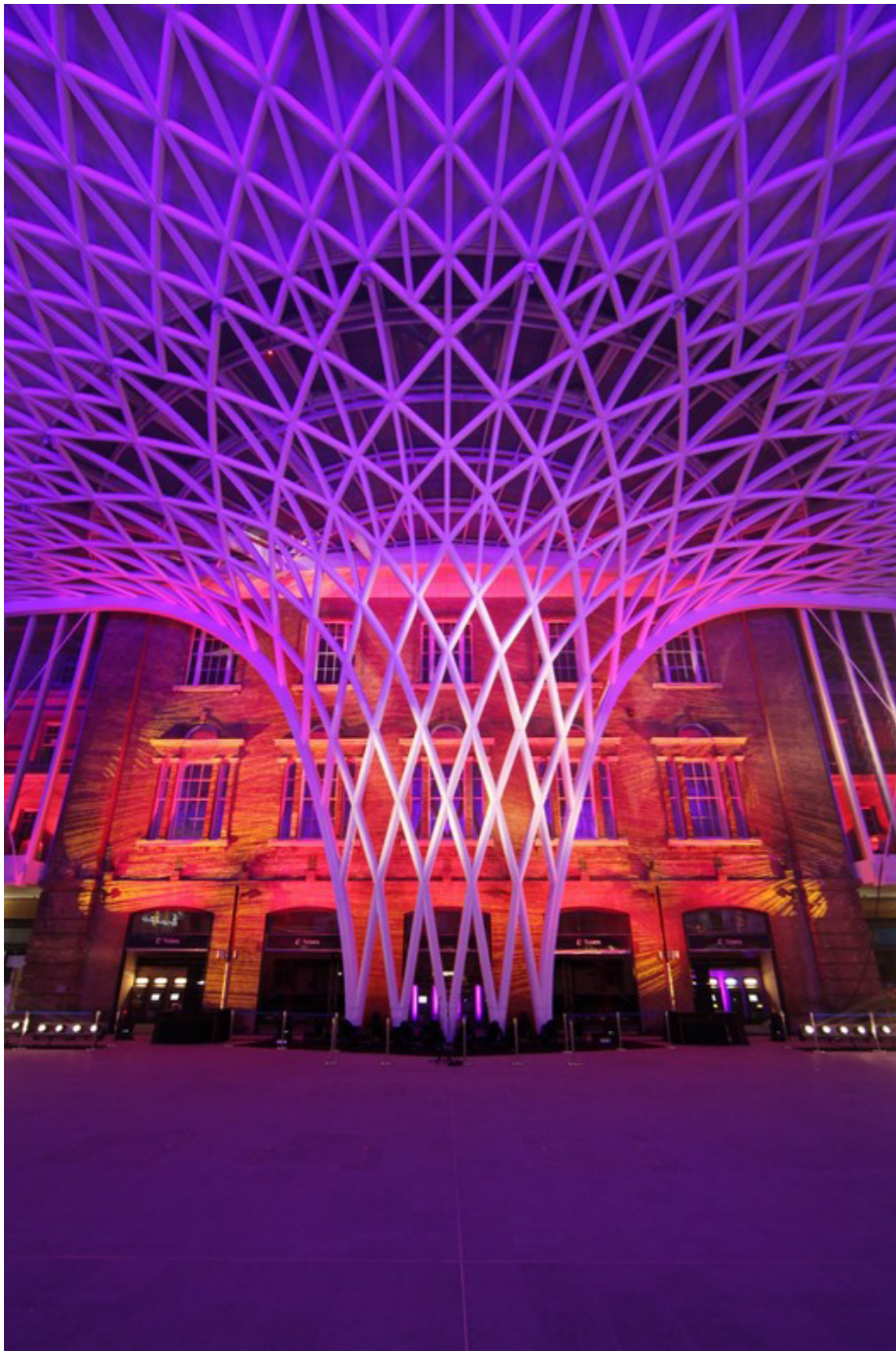


Fig. 1 London Kings Cross Station



Fig. 2 London Bridge Station



## Site selection



Fig. 3 London Euston Station



# Precedents

A house built on a cross plan in Ahmedabad, India by Spasm Design

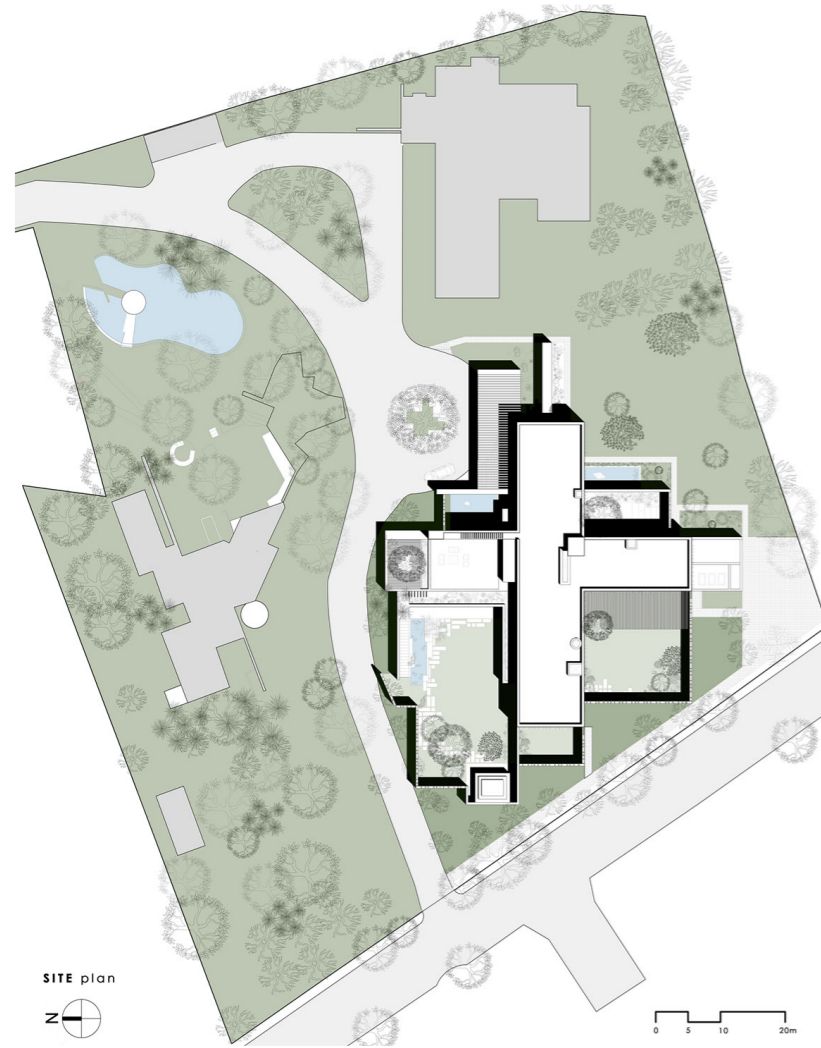


Fig. 4 House built on a cross plan - site plan

A folly with pierced through openings. Invisible Barn in Tahoe National Forest, California - designed by architecture studio STMPJ.



Fig. 5 House built on a cross plan - slatted ceiling



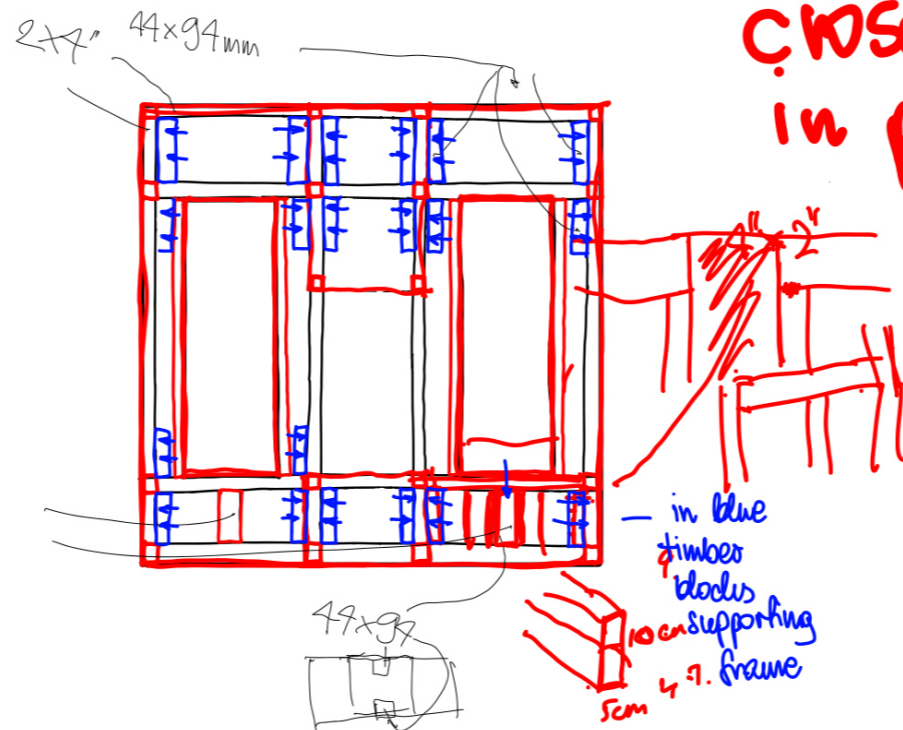
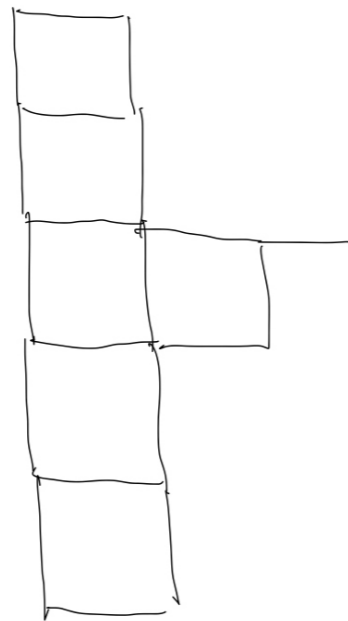
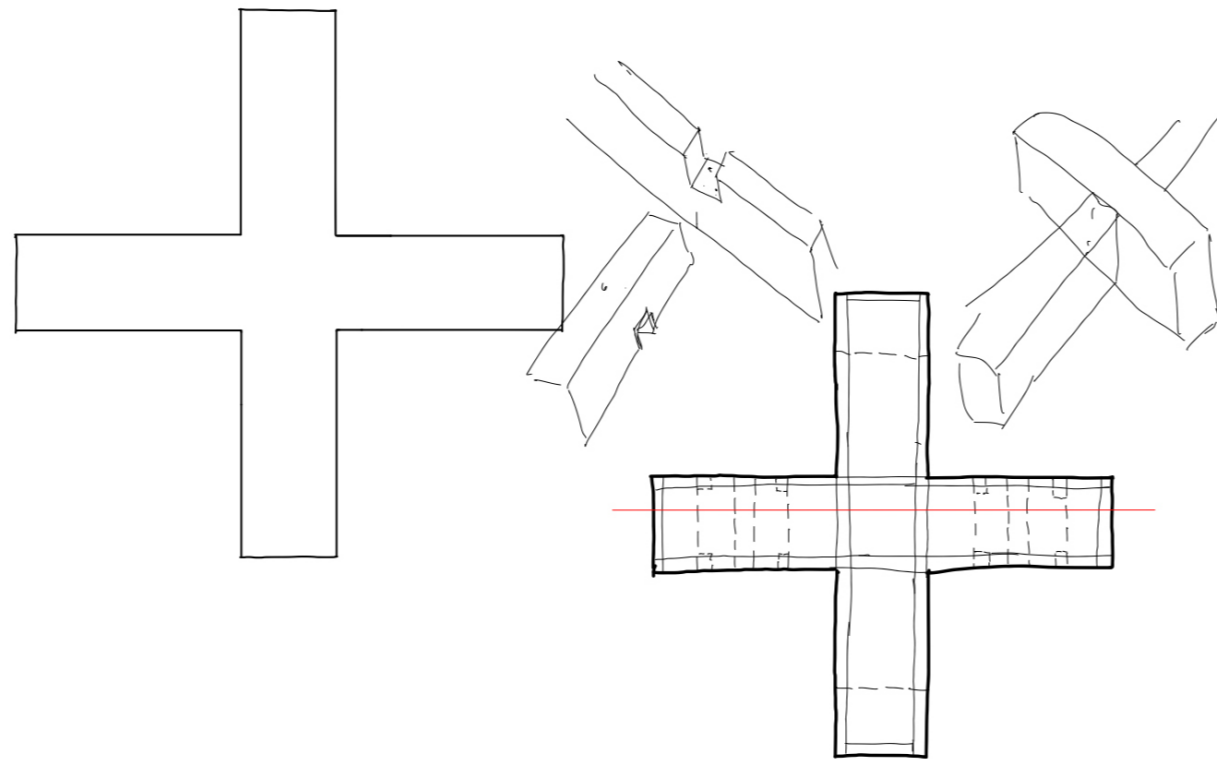
Fig. 6 Invisible barn eye level view



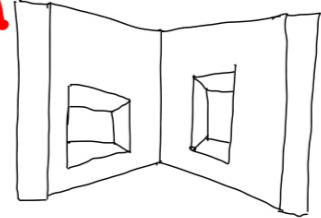
Fig. 7 Invisible barn looking up



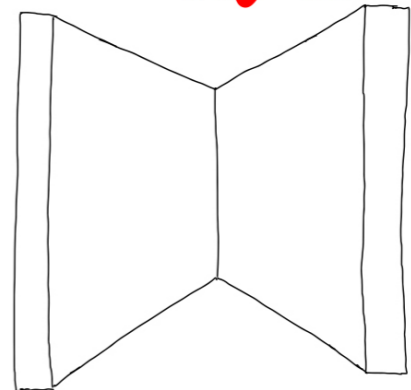
# Development sketches



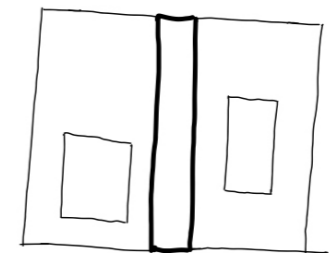
boundary pierced through



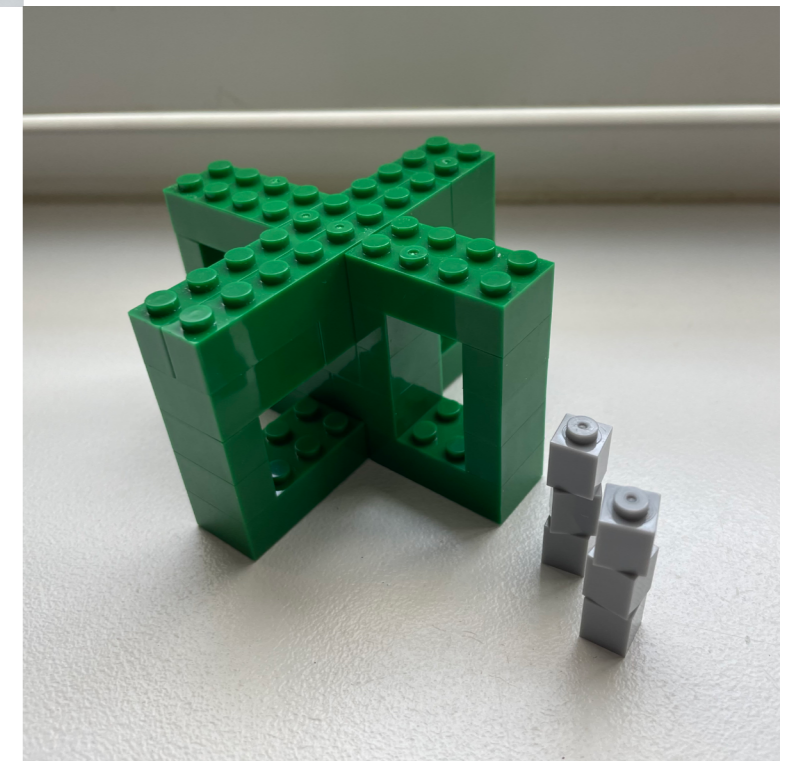
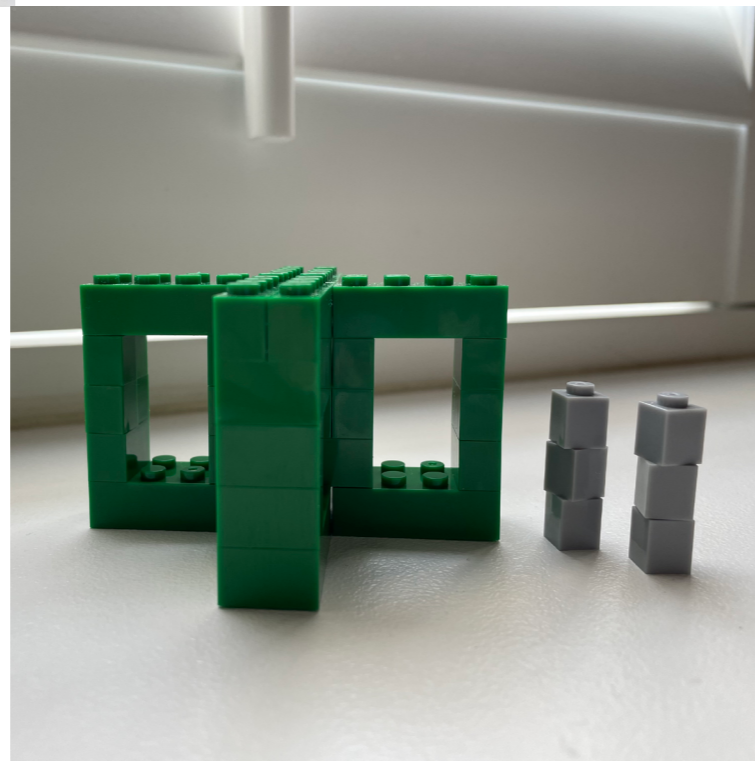
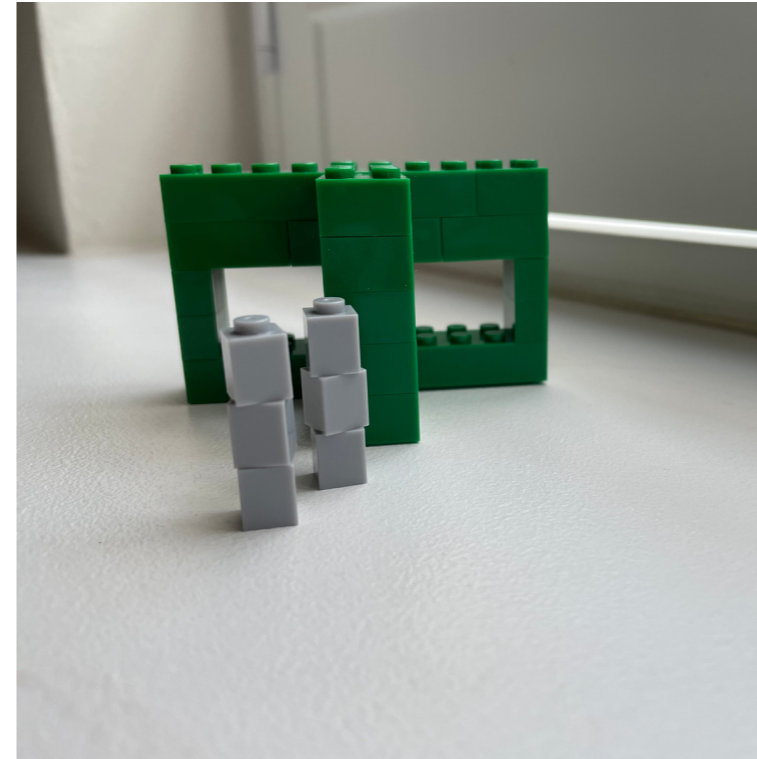
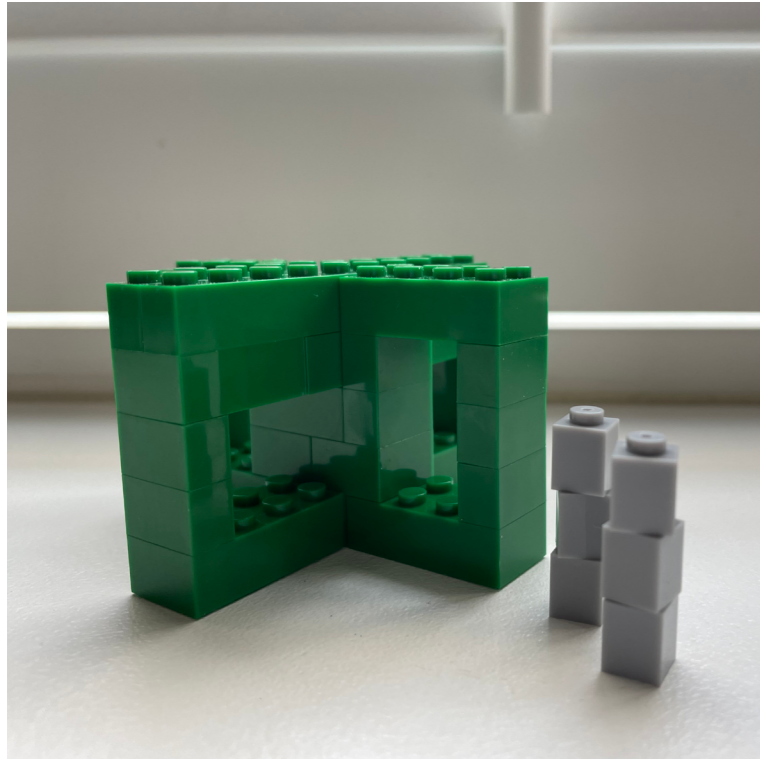
also no boundaries in wall.



cross plan in protest to violence

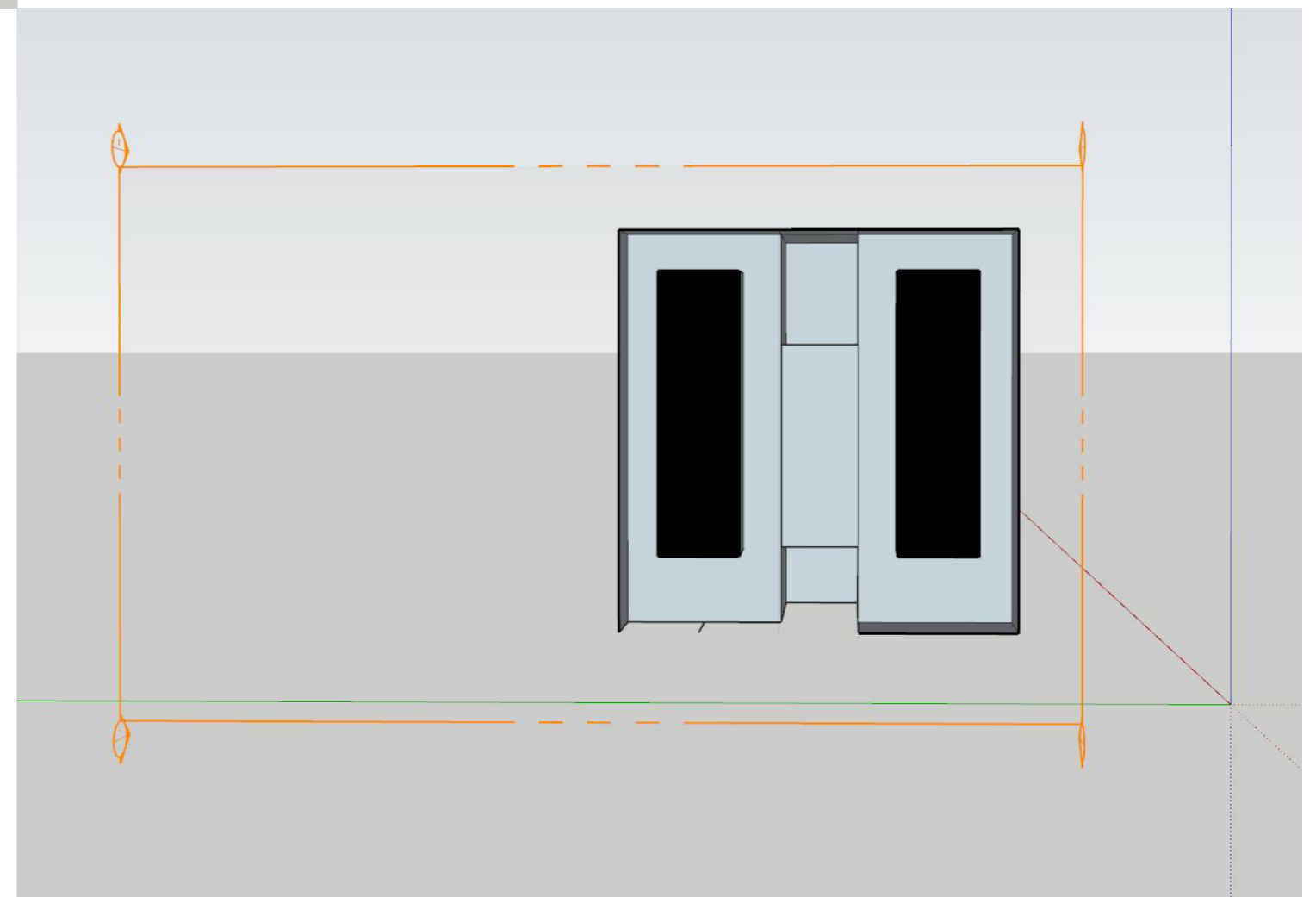
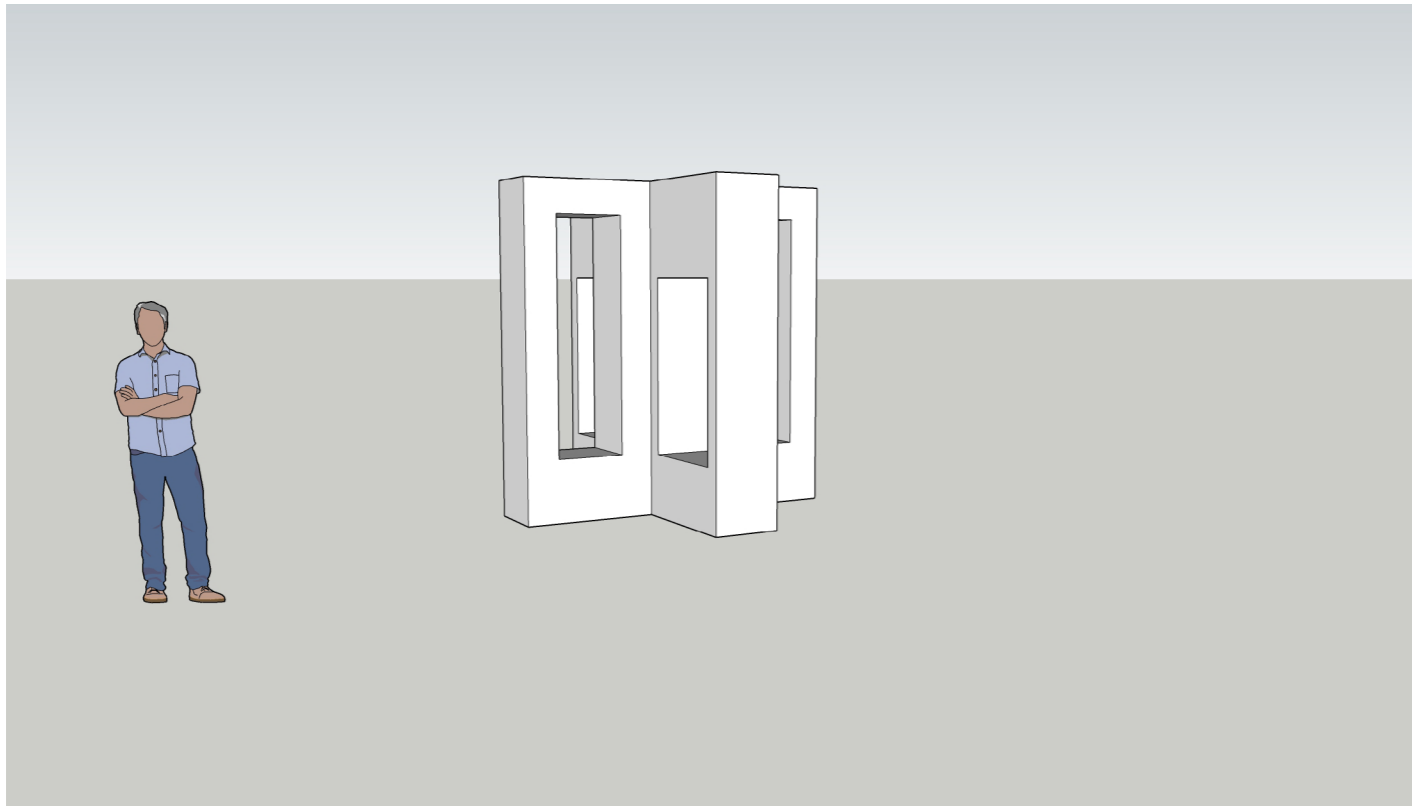


# Development sketches





# Development sketches



## Materials

Tongue and groove cladding.

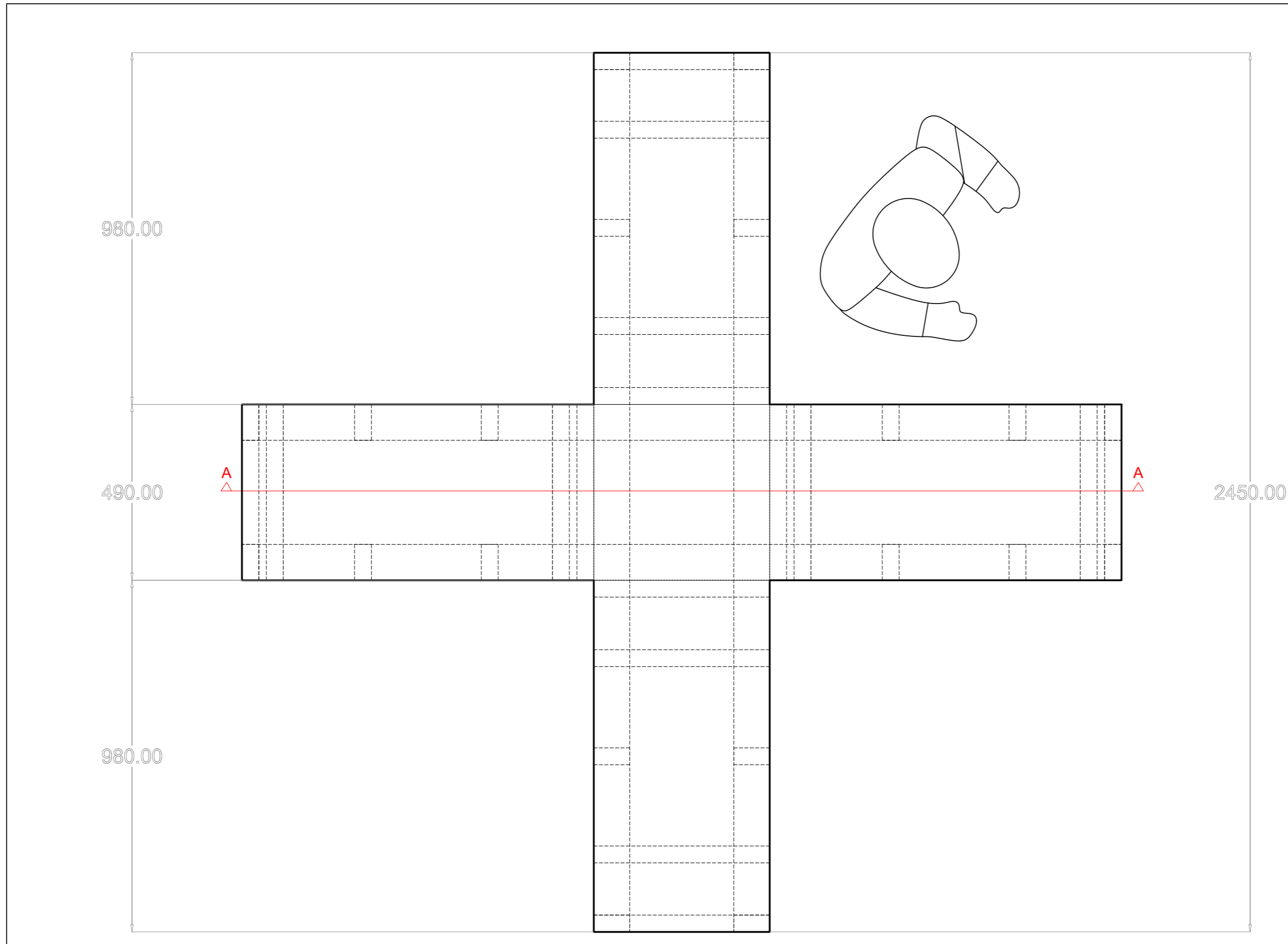


Matte red paint, hard wearing





# Technical Drawing - plan



Course details:  
OCA BA Hons  
Interior Design

Course Stage:  
Unit 2  
Part 2

Project details:  
Assignment 2  
Folly

Notes:  
© 2022 A. Frodel-  
Shuttleworth  
Do not scale  
off the printout.

Drawing title:  
Plan

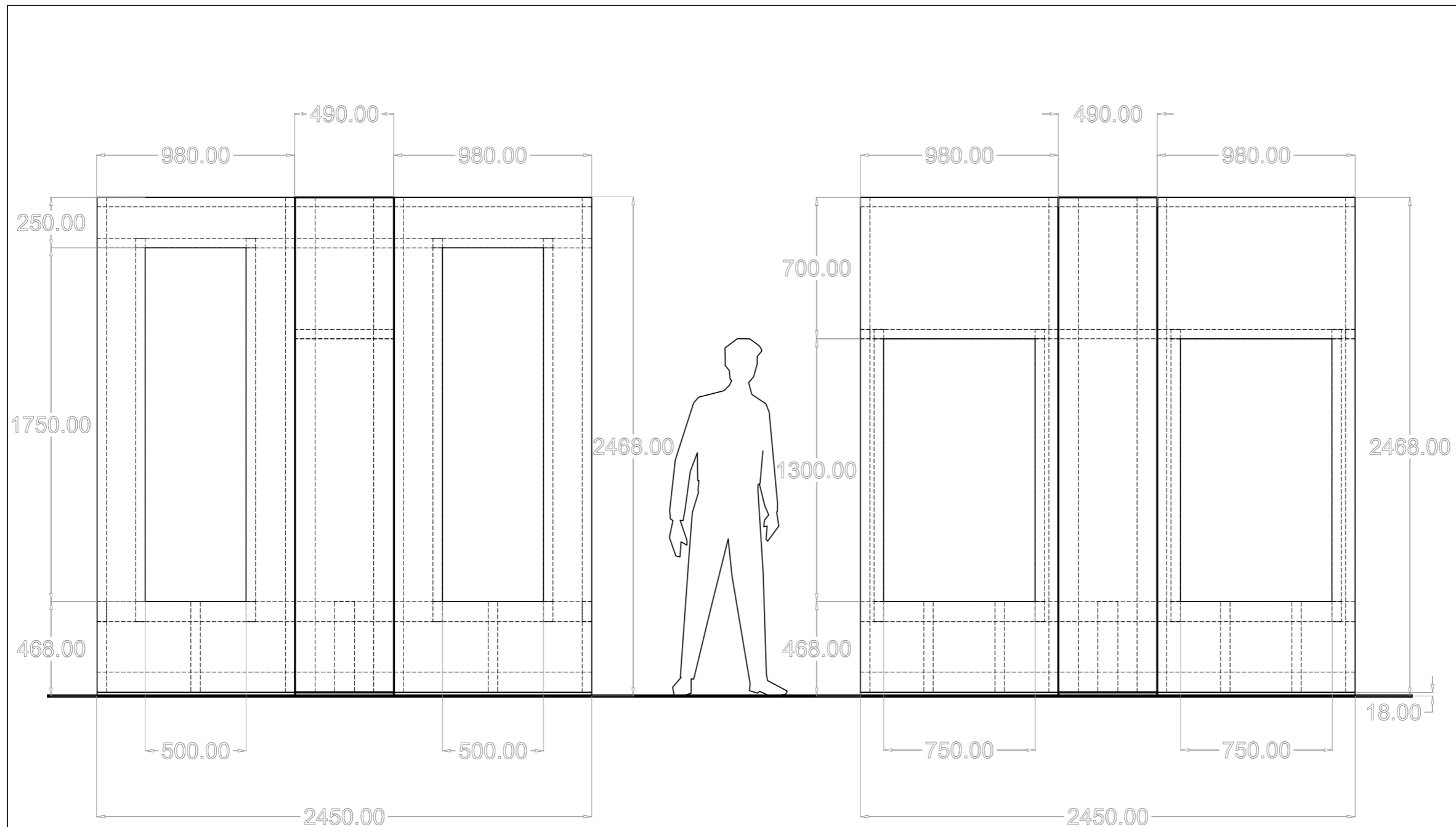
Drawn by:  
Agnieszka  
Frodel-Shuttleworth

Date:  
20/05/2022

Scale:  
1:10

Print on:  
A3 full bleed

# Technical Drawing - elevations



Course details:  
OCA BA Hons  
Interior Design

Course Stage:  
Unit 2  
Part 2

Project details:  
Assignment 2  
Folly

Notes:  
© 2022 A. Frodel-Shuttleworth  
Do not scale  
off the printout.

Drawing title:  
Elevations

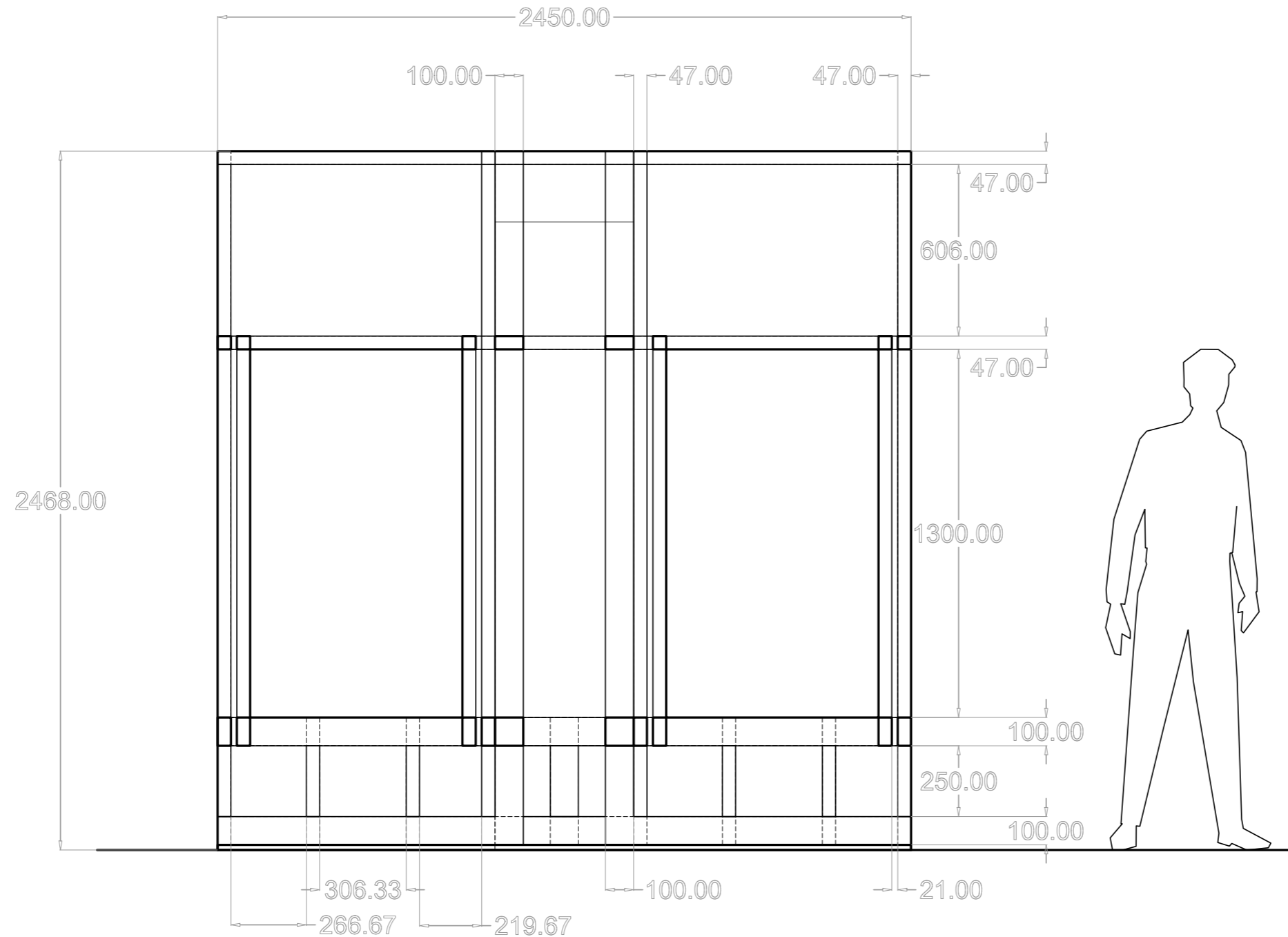
Drawn by:  
Agnieszka  
Frodel-Shuttleworth

Date:  
20/05/2022

Scale:  
1:20

Print on:  
A3 full bleed

# Technical Drawing - section A



Course details:  
OCA BA Hons  
Interior Design

Course Stage:  
Unit 2  
Part 2

Project details:  
Assignment 2  
Folly

Notes:  
© 2022 A. Frodel-Shuttleworth  
Do not scale  
off the printout.

Drawing title:  
Section A

Drawn by:  
Agnieszka  
Frodel-Shuttleworth

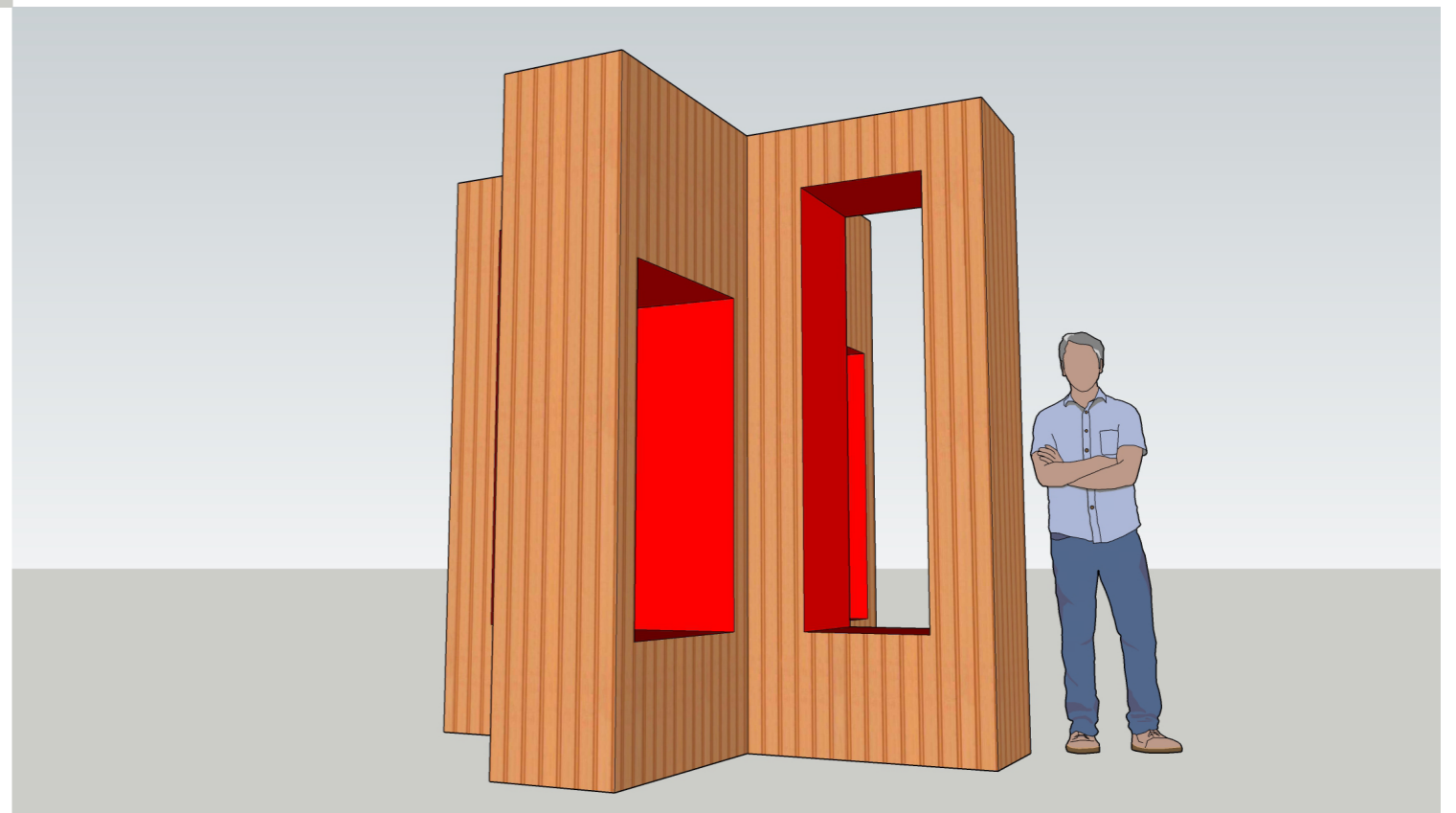
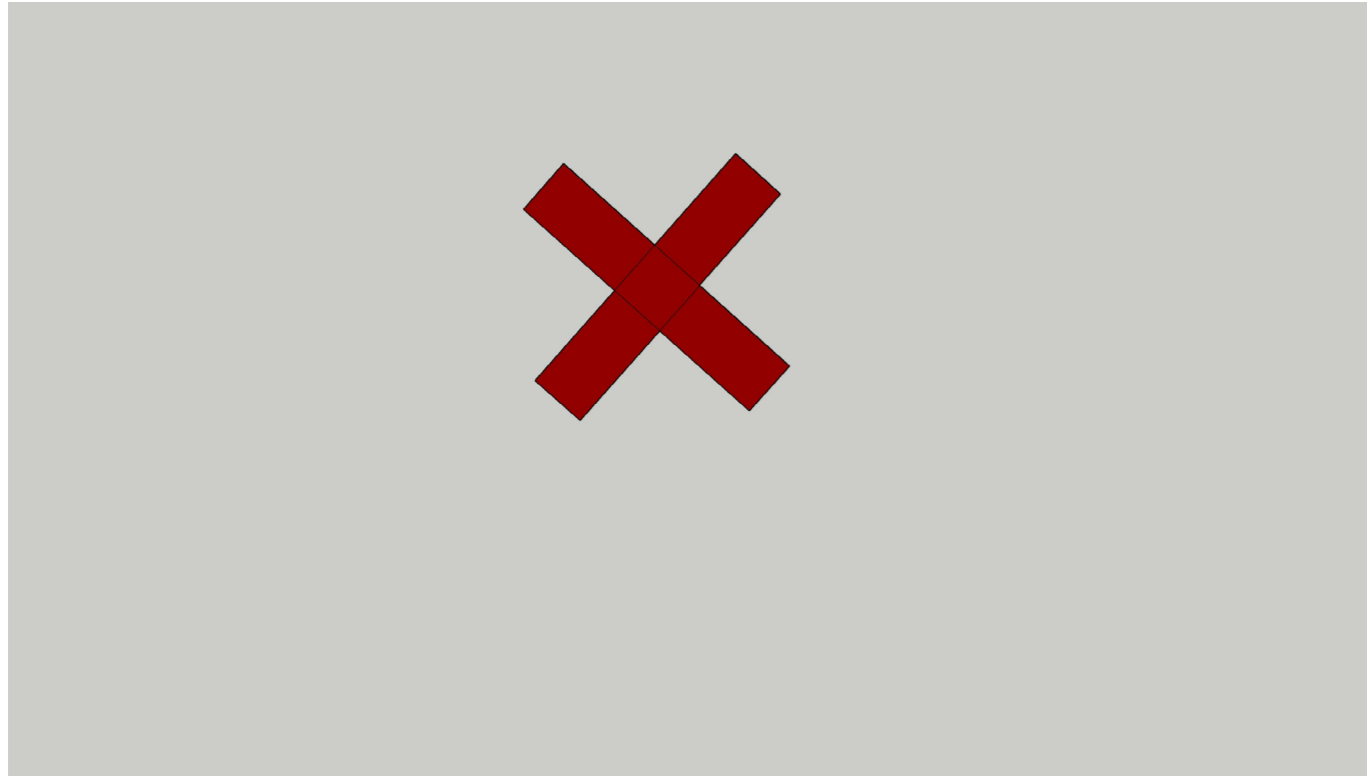
Date:  
20/05/2022

Scale:  
1:16

Print on:  
A3 full bleed



# Digital model visual



# Visual Inside Euston Station

